

HOTEL
CECIL

VENUE RIDER

VENUE FACILITIES

Address

Hotel Cecil
Niels Hemmingsens Gade 10
1153 Copenhagen K
Denmark
[Google Maps Link](#)
E-mail. info@hotelcecil.dk

Booking

Soren Hvidt
Ph. +45 23668128
E-mail. soren@hotelcecil.dk

Production/Sound & Light

Benjamin Birch
Ph. +45 50414696
E-mail. benjamin@hotelcecil.dk

Capacity

350 (standing) or 215 (seated)

Stage / Clearance

8m x 4m x 1m / 4,5m

Load-in

Lift

Parking

Public parking in front of the venue

Access to stage

Direct from dressing room

Barriers

No

Backstage Area

1 dressing room (Main)
1 dressing room (Support)
1 Shower

Backstage internet

Yes

Dinner

Buy-out

Hotel partner

Ibsens Hotel ***
Vendersgade 23
1363 Copenhagen K
Denmark
Ph. +45 33457744
E-mail. ibsens@arthurhotels.dk
Web. www.arthurhotels.dk

Arthur Hotels ****
Nørre Søgade 11
1370 Copenhagen K
Denmark
Ph. +45 33457700
E-mail. kongarthur@arthurhotels.dk
Web. www.arthurhotels.dk

SOUND SPECIFICATIONS

MIXING DESK

1x Soundcraft VI2000

1x Stagebox 48/input - 16/output - 4/AES

PA/MONITORS

Top

Left: 1x L-Acoustics Arcs Focus, 1x L-Acoustics Arcs Wide

Right: 1x L-Acoustics Arcs Focus, 1x L-Acoustics Arcs Wide

Subs

Left: 2x L-Acoustics SB18

Right: 2x L-Acoustics SB18

Delay

4x L-Acoustics X8

Amps/processors

Top: 1x L-Acoustics LA4X

Stage: 1x L-Acoustics LA4X

Delay: 1x L-Acoustics LA4X

Monitors

6x sends

6x L-Acoustics X12

2x L-Acoustics LA4X

MICROPHONES

1x Shure Beta 52a
1x Shure beta 91a
7x Shure SM57
5x Shure Beta 58

1x SE Electronics V Kick
3x SE Electronics V Beats
1x SE Electronics v7X
2x SE Electronics SE8
5x SE Electronic s v7

2x Lewitt LCT 440
4x Lewitt LCT 040

2x Sennheiser E904
1x Sennheiser E901
1x Sennheiser E902
2x Sennheiser E906
4x Sennheiser E914

1x dbx Driverack RTA-M
2x AKG C218B
10x bss DI

MIC STANDS

9x stands w/ boom
1x straight stands w. round foot
7x small stands

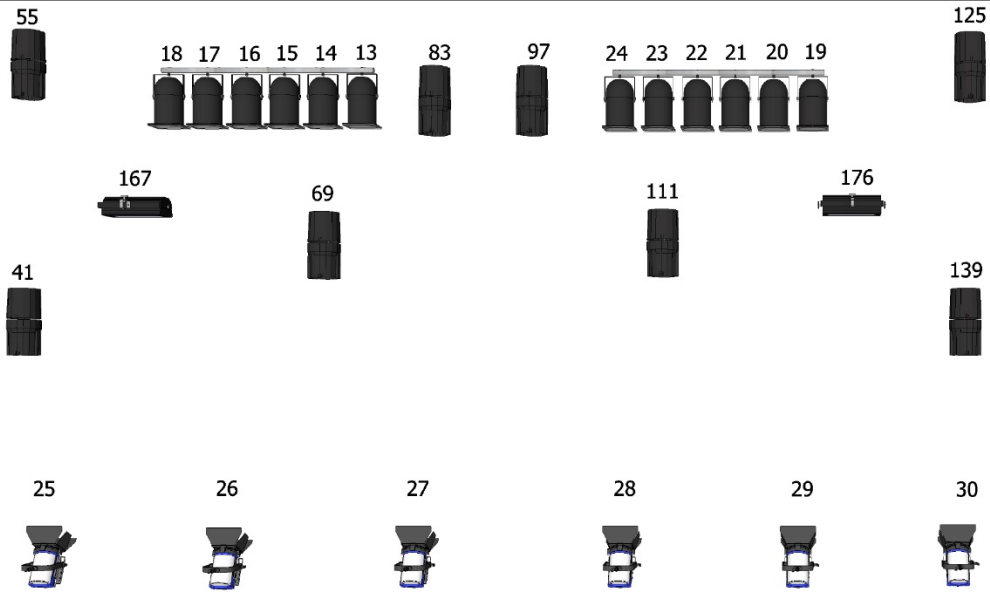
Cables





10x XLR – 2 meters
10x XLR – 3 meters
15x XLR – 5 meters
10x XLR – 10 meters
3x par 8 box 10 meters
1x per 12 box 10 meter
10x 230v 5 meters (DK plug)
5x Cee to DK/schuko

Cecil Stage

Lightplot w DMX Patch

Feb 2018



-  Showtec Strobe Blaze
1500w Xenon, RGB Aura
9 CH Mode
-  Robe Perfect 100 RGBW
Mode 1, 14 CH
-  PAR64, 1000W (CP61)
-  Chauvet Ovation F95WW
1 CH Mode

Other assets:
 Houselights : Ch 1-4
 Spare Dim FOH: Ch 5-12
 Haze: Ch 31+32
 4 DMX lines to FOH

FOH Control: Avolites Tiger Touch Pro

GENERAL SPECIFICATIONS AND INFO

POWER

32A for LIGHT

16A/3 for PA/MONITORS

16A/3 Spare

NIGHTLINER

There is a 3200 DKK fee on nightliner production to cover shuttle / transfer from parking area ([Bremen Teater](#)) to venue ([Hotel Cecil](#)) [Transport Map](#)

16A/3 Power for nightliner

STAGE HANDS

There will be no stage hands available for load in and load out unless agreed upon prior to show day.

RENTAL

AV

Optoma gt 5500+ projector 3000 ansi lumens and stumpf rear projection screen (3,65m x 2,10m): 2000,- DKK Ex.Vat

PIANO

Yamaha B3 upright piano.1000,- DKK Ex.Vat

Piano tuning: 1000,- DKK Ex.Vat